

ITEM	QTY.	DESCRIPTION	PART NO.	MAT'L SPEC	DWG. NO.
1	1	BODY-- WELDED ASSEMBLY	P400*	STN. STL	
2	2	MODULE CUP	PW-84	STN. STL	PS7289-A
3	2	SEALING GASKET	PW-90	MONEL	PS7290-A
4	2	MICA SHIELD	PW-89	MICA	PS7008-A
5	2	GAGE GLASS	PW-18	GLASS	A-10419
6	2	CUSHION GASKET	PW-63	COPPER	PS7154-A
7	2	LID WASHER	PW-64	STN. STL	PS7155-A
8	2	SPRING RETAINER	PW-40	STN. STL	PS7003-A
9	4	SPRING WASHER	PW-66	STN. STL	
10	2	PACKING NUT	PW-65	STEEL	PS7156-A
11	4	HEX HEAD CAP SCREW AND WASHER $\frac{1}{8} \times \frac{1}{2}$	X172125	STN. STL	
12	1	CONNECTOR	PW-96	STN. STL	PS7311-A
13	1	EXPANSION LOOP	PW-31	STN. STL	PS7197-A
14	1	TOP ADAPTOR	PW-33	STN. STL	B-14312
15	1	BOTTOM ADAPTOR	PW-33	STN. STL	B-14312

SIMPLIPOINT PART NO.	NO. OF WINDOW UNITS	VISION A		MIN. WATER GAGE CENTERS FOR SG777 VALVES C		BODY D		E		G (MINIMUM)		TO BE SPECIFIED BY CUSTOMER		
												SIMPLIPOINT PART NO.	C	G
		INCHES	MM	INCHES	MM	INCHES	MM	INCHES	MM	INCHES	MM			
P4105L	5	10 1/4	(260.3mm)	18 7/8	(479.4mm)	11 7/8	(301.6mm)	12 3/4	(323.9mm)	6 15/16	(176.2mm)			
P4106L	6	12 5/8	(320.7mm)	21 1/4	(539.8mm)	14 1/4	(362.0mm)	15 1/4	(384.2mm)	8 1/8	(206.4mm)			
P4107L	7	15	(381mm)	23 5/8	(600.1mm)	16 5/8	(422.3mm)	17 1/2	(444.5mm)	9 5/16	(236.4mm)			
P4108L	8	17 3/8	(441.3mm)	26	(660.4mm)	19	(482.6mm)	19 7/8	(504.8mm)	10 1/2	(266.7mm)			
P4109L	9	19 3/4	(501.7mm)	28 3/8	(720.7mm)	21 3/8	(545.1mm)	22 1/4	(545.1mm)	11 11/16	(296.9mm)			
P4110L	10	22 1/8	(562mm)	30 3/4	(781.0mm)	23 3/4	(625.5mm)	24 5/8	(625.5mm)	12 7/8	(327.0mm)			

NOTES:

- * TO COMPLETE PART NO. ADD NO. OF WINDOW UNITS
- ITEMS 2 THRU 10 FORM ONE COMPLETE ASSEMBLY OF SINGLE WINDOW UNIT
- ITEMS 2 THRU 7 COMPRISE A REPLACEMENT PACKAGE INCLUDING THE MODULE, TO BE ORDERED AS PART NO. PW-87B (SEE EXPLODED VIEW)
- ITEMS 8 THRU 10 COMPRISE A PACKING NUT ASSEMBLY, TO BE ORDERED AS PART NO. PW-68 (SEE EXPLODED VIEW)

ITEM	PART NO.	DWG. NO.
SIMPLIPOINT ILLUMINATORS:		
STANDARD	PI*	B-9131
WEATHERPROOF	PIW*	B-9133
LED ILLUMINATOR / EX'PROOF.	SI* LED	PS7231-A
SIMPLIPOINT HOODS:		
OPEN-END WEATHERPROOF	PHOW*	1-15-62
DIRECT-VISION WEATHERPROOF	PHOW*	B-10547
PERISCOPE-WEATHERPROOF	PHPW*	B-9133
LED HOOD	SH* LED	PS7231-A

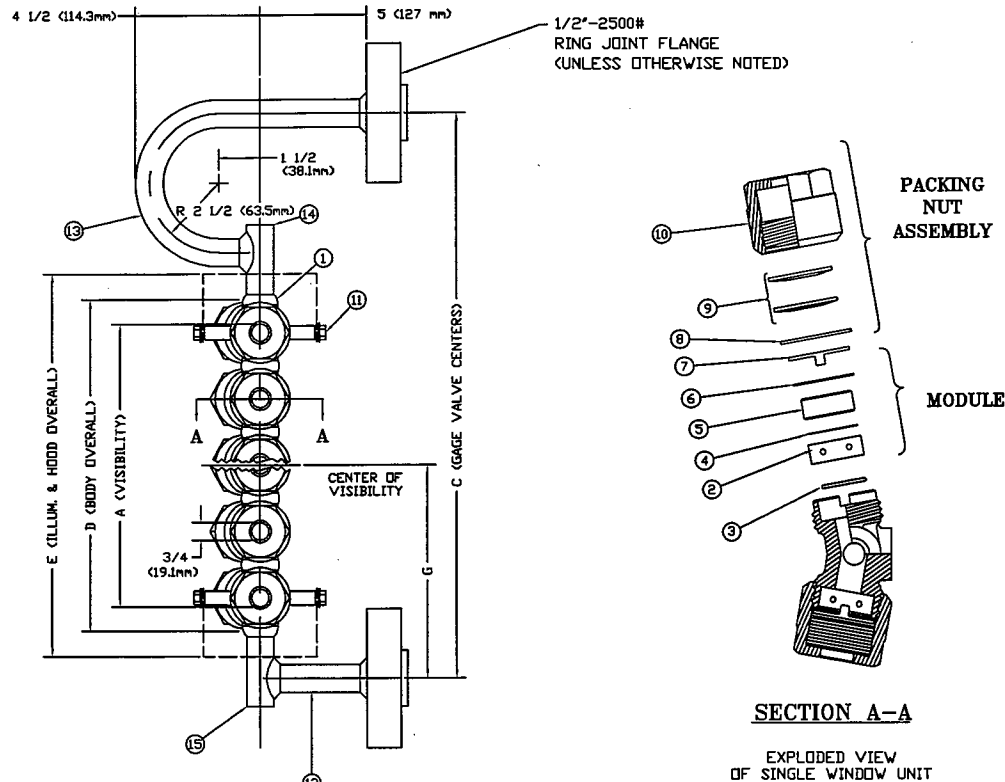
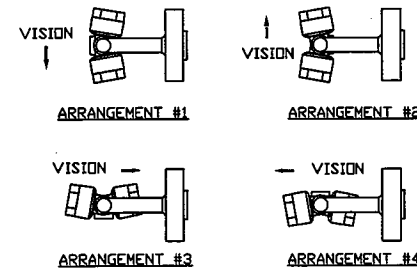


FIGURE A
FOR FLANGE CONNECTION (3000 PSI MAX)



PLEASE SELECT ARRANGEMENT REQUIRED

NOTE: FOR ARRANGEMENTS #3 & #4, CONSULT FACTORY FOR MIN. CENTERS

2	9/25/10	UPDATED LOOP & CONNECTOR FOR ILLUMINATION CLEARANCE (PW-29 & PW-28)	ST
REV	DATE	CHANGE	BY

MANUFACTURED BY
Clark-Reliance[®]
16633 FOLTZ PARKWAY
STRONGSVILLE, OH 44149 USA
PH: 440-572-1500
WEB: www.clarkreliance.com

CLARK-RELIANCE[®]

SIMPLIPOINT P41** SERIES GAGE ASSEMBLY
W/ EXPANSION LOOP & FLANGED CONNECTIONS

PART NUMBER: RP41**L		
TOLERANCE CLASS (PER PES-004):		
MATERIAL: SEE INDIVIDUAL PART DRAWINGS		
REVISION:		
DRAWN: CM	DRAWING NO.:	REV.:
CHECKED:	PS1491-A	2
DATE: 4/29/09		

PATENT NO. 3,187,573
DESIGN PRESSURE 3000 PSI
DESIGN TEMPERATURE 695°F.
HYDROTEST AT 4500 PSI